



# MONTHLY MEMBERSHIP PROGRESS REPORT

District 13 B

Results as of: 8/31/2015

GMT: Cindy Gregg

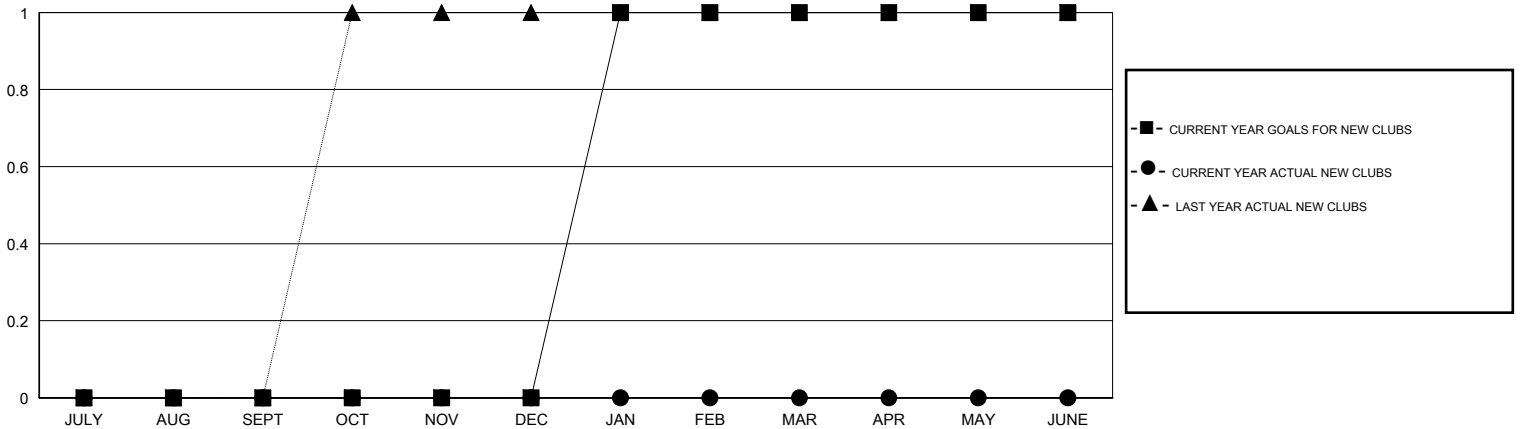
LOCATION OHIO

GMT CA 1

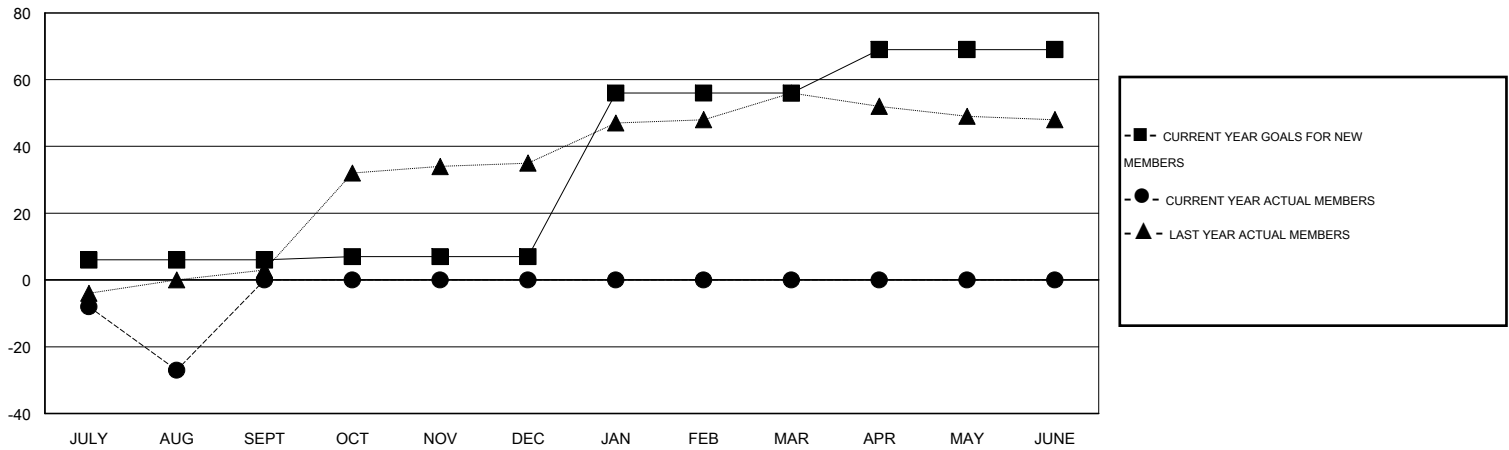
Clubs				
RESULTS FOR 2015-2016				
QUARTER	NEW CLUB GOAL	NEW CLUBS	DROPPED CLUBS	NET GAIN/LOSS
JULY/AUG/SEPT	0	0	0	0
OCT/NOV/DEC	0	0	0	0
JAN/FEB/MAR	1	0	0	0
APR/MAY/JUNE	0	0	0	0

Members				
RESULTS FOR 2015-2016				
QUARTER	NEW MEMBER GOAL	CHARTER AND NEW MEMBERS ADDED	DROPPED MEMBERS	NET GAIN/LOSS
JULY/AUG/SEPT	6	16	43	-27
OCT/NOV/DEC	1	0	0	0
JAN/FEB/MAR	49	0	0	0
APR/MAY/JUNE	13	0	0	0

GOALS AND ACTUAL NEW CLUBS CUMULATIVE



GOALS AND ACTUAL MEMBERS CUMULATIVE



DROPPED CLUBS: 0	9 CLUBS OF 56 ADDED 1 OR MORE NEW MEMBERS	<u>GENDER DISTRIBUTION</u>	
<u>DROPPED MEMBERS</u>		MALE	1,448 (76.21%)
DECEASED	6	FEMALE	452 (23.79%)
CLUB CANCELLED	0	<u>FAMILY UNIT MEMBERS</u> 366	
OTHER	37	<u>HEAD OF HOUSEHOLD</u> 179	
<b>TOTAL</b>	<b>43</b>	<u>NON-HEAD OF HOUSEHOLD</u> 187	

[CLICK HERE FOR HEALTH ASSESSMENT DATA](#)